



Communities
In Schools

New Mexico

ANNUAL REPORT



2024 - 2025

The mission of Communities In Schools of New Mexico is to surround students with a community of support, empowering them to stay in school and achieve in life.

A MESSAGE FROM OUR EXECUTIVE DIRECTOR, MICHELLE KATZ

Dear Friends & Supporters,

This past year has been one of successes to celebrate and challenges that were met with resilience and courage. We held true to our vision to deepen and widen our work this year, expanding to serve two additional schools, nurturing our organizational culture of belonging, fine-tuning our case management and student support practices, and upgrading our data and evaluation systems. Thanks to your generous support and encouragement, we now serve 14 Title I schools and provide CIS support and resources to 6,900+ PreK-12 New Mexico students and their families.

We have engaged many new partners this year, while also nourishing close bonds with long-term supporters and deepening our collaboration with the Santa Fe Public Schools. In addition to expanding into Gonzales Elementary in Santa Fe and Del Norte High School in Albuquerque, we piloted our Family Institute, an innovative approach to providing caregivers with deep, family-centered support through our schools. Our fledgling Alumni Program served 50+ CIS alumni this year, thereby providing recent graduates with the resources, support, connections and opportunities that can help them achieve their postsecondary dreams. Our statewide Yellow Ribbon suicide prevention program introduced CIS and our work to 53 distinct communities across the state of New Mexico and provided vital strategies and tools to 3,060 youth and their supporters, helping to prevent youth suicide. At the systems level, our staff and alumni visited with lawmakers during the 2025 New Mexico Legislative Session, and CIS of New Mexico was included in CIS National's advocacy efforts in Washington, D.C.

As we celebrate our successes, we must also acknowledge that this has been a challenging year. A major shift in the federal funding landscape meant that we had to discontinue our Yellow Ribbon program in order to focus resources on our core work of serving students and families through the schools. Executive actions and federal funding cuts continue to create a climate of uncertainty and chaos for our organization and those we serve. We are rising to meet this moment by rallying our partners and our supporters. Our All In For Kids Town Hall held this June created a call to action for those who wish to advocate for youth, families, our community and public education. We will continue to be a hub within our community in any way we can because we know we are stronger together. We remain committed to working with our schools, our partners, and those we serve to empower positive and lasting change.

Through all of this, our most consistent sources of strength, hope and resilience have been the youth we serve and you, our generous supporters. You have played a crucial role in helping CIS of New Mexico reach thousands of students and their families this year. Your partnership has made mentoring, tutoring, food distributions, emergency housing and utility assistance, resource navigation, family services and so much more possible. As we reflect on the past year, we celebrate the progress we have made. But many challenges remain, and the need is great. Your unwavering support will help us continue to reach students and help them stay in school, graduate, and achieve their dreams.

On behalf of the Communities In Schools of New Mexico Board of Directors, staff, and the students and families we serve, thank you for your ongoing generosity and support. Together we are building a brighter future. We are excited to continue this work with you.



A handwritten signature in blue ink, appearing to read 'M. Katz'.

Michelle Katz, Executive Director
and the Communities In Schools of New Mexico Team



OUR VALUES

COMMUNITY

EMPATHY

INTEGRITY

EQUITY

JOY

INSPIRATION

LEARNING

www.cisnm.org

BOARD OF DIRECTORS

Let me begin this message with gratitude for all who contribute to Communities in Schools NM's work and help to change the trajectory of the lives of the students and families we serve. We are blessed in the commitment of our community partners, volunteers, and donors with whom we could not do this important work. I am, as always, particularly grateful to the CISNM team who live the work everyday and make impacts that ripple throughout the community. They are an amazing set of people.

This year provided free school and community suicide prevention trainings throughout New Mexico as part of our Yellow Ribbon Suicide Prevention program. We achieved a 96% graduation rate for those students served at Capital High School. It is because of the work of all of the talented and dedicated individuals that CISNM hosted the first All in for Kids Town Hall, bringing together non-profit leaders and community members to discuss the expected impacts of sudden and coming federal funding cuts and the ways we can pull through the problems together.

The year did not come without its challenges. In the same moment we celebrate the impact of Yellow Ribbon, we lament its pause resulting from a loss of federal funding. We know the challenges our students, families, and communities face based on recent decisions around education, immigration, and shifting priorities. In a time when the work done by CISNM becomes more and more critical, we struggle with having enough resources.

The good news is we have a committed and enthusiastic team and incredible community partners who, together, will help to move the work forward. The Board of Directors embarks on a strategic planning process this June that will aid us in supporting CISNM in a time of uncertainty and will welcome new voices and lenses to that work throughout the year. Though there are many questions to answer and challenges to face, we are optimistic in the results we have seen over more than a decade and know the strength and gifts of the students and families we serve.



Again, thank you to all those who make CISNM's impact possible and please, if you're interested in becoming part of this work, reach out to find out how to become a volunteer, donor, or board member.

With gratitude,

A handwritten signature in blue ink, appearing to read 'Rebecca'.

**Rebecca Estrada, Ed. D., Board Chairperson ~ Renee Stevens, Vice-Chairperson ~ Marcos Maez, Board Treasurer
Anna Vargas Gutierrez, Board Secretary ~ William Feinberg ~ Christina Price, M.D. ~ Caren Shiozaki
Heather Sellers ~ June Yoder ~ Jackson Dooling ~ Adris Samadi ~ Joanna Ruppel ~ Aseneth Ultreras**



COMMUNITY VOLUNTEERS

The CISNM volunteer program consisted of **69** volunteers, including high school students, working professionals and retirees. They provided **1467+** tutoring sessions equaling over **2,675+** hours of academic support to PreK-12 students in **13** schools this year!



We want to give a special thank you to Mrs. Katie for her unwavering dedication and love as a volunteer tutor! Over the past year, she has consistently worked with a 2nd-grade student, building a strong bond of trust and support that has made all the difference. Mrs. Katie's patience, kindness, and genuine care for her student shine through in everything she does. She has provided him with the tools and confidence to keep succeeding, and her consistent presence has made such a positive impact on his growth. Whether it's providing extra help or just showing up with a smile, Mrs. Katie always goes above and beyond to ensure he feels supported and encouraged. Thank you, Mrs. Katie, for your endless commitment and the heart you put into everything you do. You are truly a gift to our students, and we are so grateful for all the ways you make a difference!

- Becca, Student Success Facilitator

"CIS IS SO WELL ORGANIZED AND SO RESPECTFUL OF THE TUTORS AND STUDENTS. I THINK TWO OF MY FRIENDS ARE SIGNING UP FOR NEXT YEAR BECAUSE OF ALL THE POSITIVE COMMENTS I HAVE ABOUT THE PROGRAM."

Barbara M.

"TWO STUDENTS I WORKED WITH BOTH GRADUATED (FROM HIGH SCHOOL), AND SUPPORTING THEM AND ATTENDING THEIR GRADUATION WAS SUCH A GREAT EXPERIENCE."

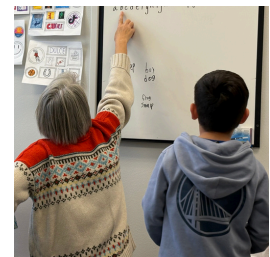
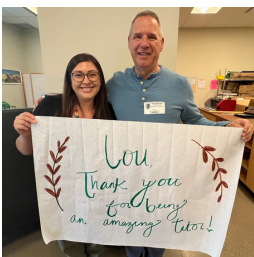
Jenny H.

"VERY REWARDING EXPERIENCE; THIS YEAR I FELT LIKE MY STUDENT MADE REAL PROGRESS."

Cindi S.

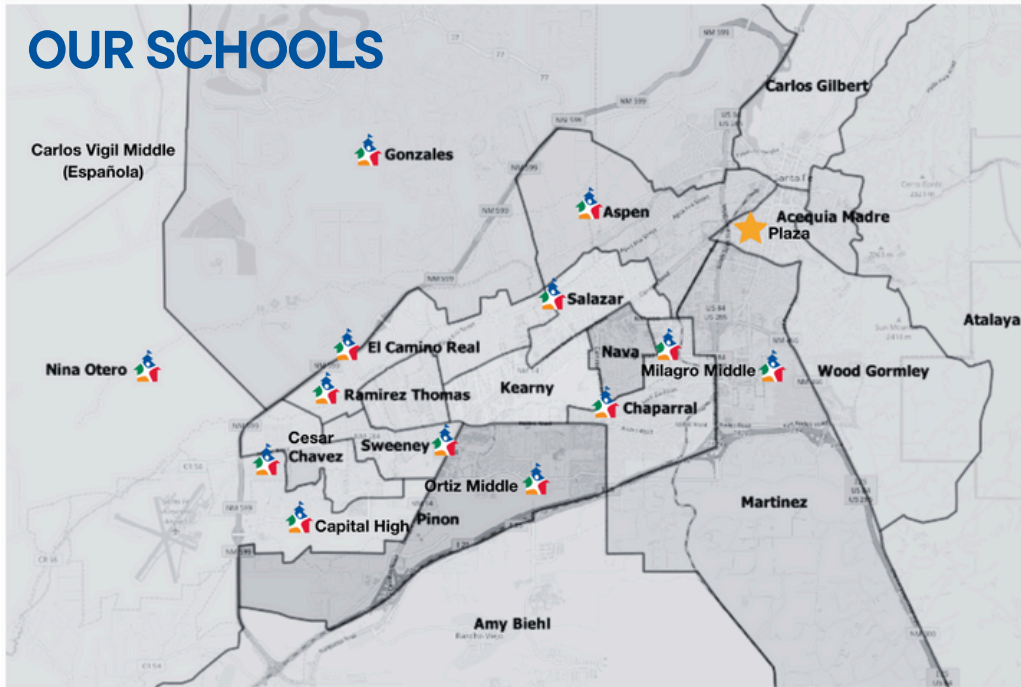
"THE TWO KIDS I WORKED WITH HAD RECENTLY ARRIVED IN SANTA FE AND THE U.S.; THEY WERE ENGAGED, APPRECIATIVE, ENTHUSIASTIC AND DOWN-RIGHT ADORABLE. I SEE GREAT FUTURES FOR BOTH OF THEM."

Jeffrey P.



WHO WE SERVE

6,916 Pre K-12th grade students in 14 Title I (high-poverty) schools



OUR SCHOOLS

Family Risk Factors*

86% Students one or more grade levels behind

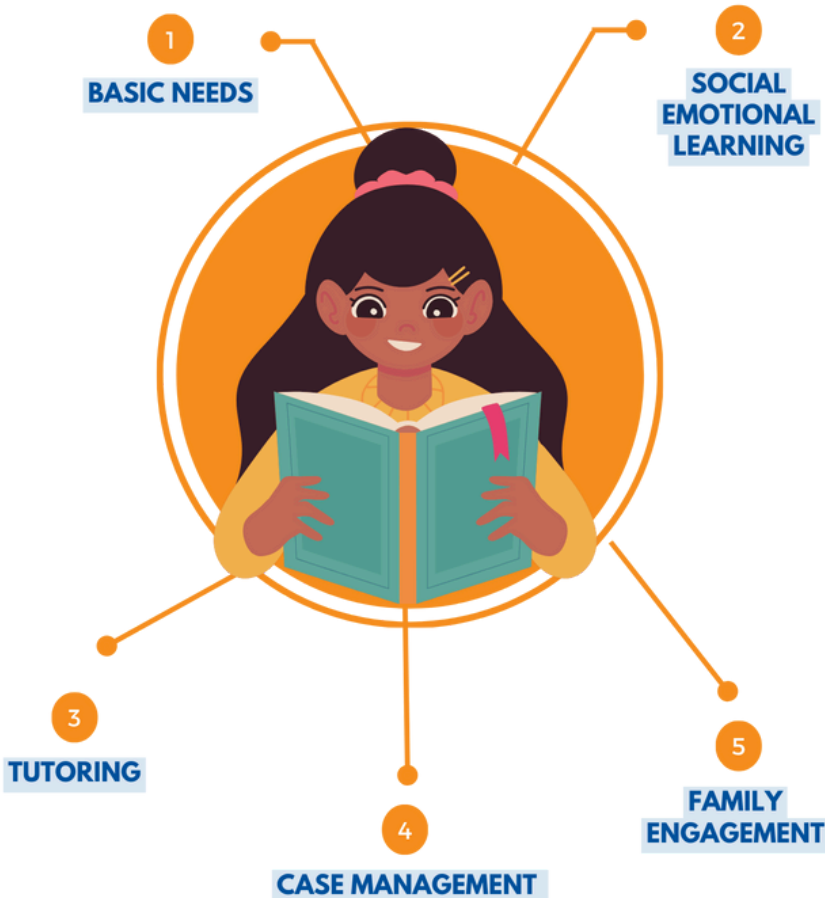
82% Emotional stress due to trauma

77% Lack of access to basic needs

*% of 2024-25 case managed students experiencing family risk factors

ABQ - Del Norte High School

CIS CIRCLE OF CARE



100%

QUALIFY FOR FREE & REDUCED SCHOOL MEALS

86.9%

IDENTIFY AS HISPANIC OR NATIVE AMERICAN

34.5%

ARE ENGLISH LANGUAGE LEARNERS



"Merry is fantastic at building relationships. She has brought so much to our community that it is difficult to pinpoint specific examples as there are so many. If I were to highlight one, it would be to her ability to work with small groups across the K-8 community with a deft touch and create lasting relationships with those students." - School Administrator

YELLOW RIBBON SUICIDE PREVENTION PROGRAM

Yellow Ribbon Suicide Prevention Trainings February 2024 - June 2025



Program Snapshot 2024-2025

- 130 youth, school staff and community trainings at 53 distinct sites in 16 counties
- School staff trained: 1,246
- Students trained: 3,060
- Community members trained: 145
- Total number of participants trained: 4,451





OUR IMPACT

HOW MUCH DID WE DO?

STUDENTS WITH ACCESS TO CIS SUPPORTS = **6916**

FUNDS PROVIDED THROUGH FAMILY EMERGENCY FUND = **\$85,369**

FUNDS RAISED TO PROVIDE SCHOOL SUPPLIES, CLOTHING AND SHOES = **\$19,600**

MEALS' WORTH OF HEALTHY GROCERIES DISTRIBUTED = **78,678**

IS ANYONE BETTER OFF?

SCHOOL STAFF SURVEY BEST RESULTS:

- **98.5%** OF STAFF AGREE THAT CIS FACILITATORS DEVELOP CARING, CONSISTENT RELATIONSHIPS
- **97.1%** RATE CIS AS HAVING TRANSFORMATIVE OR SIGNIFICANT IMPACT IN PROVIDING BASIC NEEDS
- **94.1%** SEE TRANSFORMATIVE OR SIGNIFICANT IMPACT ON CREATING A POSITIVE SCHOOL ENVIRONMENT
- **93.3%** REPORT TRANSFORMATIVE OR SIGNIFICANT IMPACT THROUGH CASE MANAGEMENT

HOW WELL DID WE DO IT?

CASE MANAGED STUDENTS WHO GRADUATED ON TIME = **96%**
(46 STUDENTS)

CASE MANAGED STUDENTS WHO STAYED IN SCHOOL = **96%**

CASE MANAGED STUDENTS WHO PROGRESSED IN AN ATTENDANCE, ACADEMIC, OR SOCIAL EMOTIONAL GOAL = **60%**

*"Our Student Success Facilitators have poured themselves into supporting our students, families, and community by working with organizations to provide books for students, food for families, support and engagement with and for our school-wide, quarterly family engagement events, elementary and MS soccer, tutoring, SEL groups Gerard's House grief support, and SKY Center Inner-Outer Life Skills."
- SFPS Administrator*

96%

of case-managed seniors graduated



96%

of case-managed students stayed in school





FOCUS AREA: ACADEMICS

ACADEMIC HIGHLIGHTS

- STUDENTS WHO STAYED IN SCHOOL: **96%**
- SENIORS WHO GRADUATED: **96%**
- STUDENTS BENEFITING FROM TUTORING, IN-CLASS SUPPORT, FAMILY ACADEMIC NIGHTS: **1,731**
- ACTIVE TUTORS: **69**
- TUTORING SESSIONS: **1,467** SESSIONS
- HOURS OF TUTORING SUPPORT: **2,675** HOURS
- **70%** OF STAFF BELIEVE CIS MAKES A STRONG, POSITIVE DIFFERENCE IN ACADEMICS
- RISE IN OVERALL GRADUATION RATE AT CAPITAL H.S. ONCE CISNM BEGAN WORK THERE IN 2012: **24%**

SCHOOL STAFF SURVEY FINDING:

“THE CIS FACILITATOR IS ALWAYS AVAILABLE TO STUDENTS, MAINTAINS CONSTANT CONTACT WITH TEACHERS, VISITS CLASSROOMS TO PROMOTE SERVICES, GETS INVOLVED IN SCHOOL SOCIAL ACTIVITIES.”

- SFPS EDUCATOR

FOCUS AREA: ATTENDANCE

- STUDENTS PARTICIPATING IN CIS-LED ATTENDANCE INITIATIVES: **2,218**
- STUDENTS AVOIDING CHRONIC ABSENTEEISM: **63%**
- HOURS OF SUPPORT FOR ATTENDANCE: **419**

“THE CIS STUDENT SUCCESS FACILITATOR HAS SIGNIFICANTLY IMPACTED OUR SCHOOL COMMUNITY BY IMPLEMENTING TARGETED INTERVENTIONS FOR AT-RISK STUDENTS, RESULTING IN AN INCREASE IN STUDENT ATTENDANCE AND IMPROVED ENGAGEMENT IN CLASSROOM ACTIVITIES.” - SFPS EDUCATOR



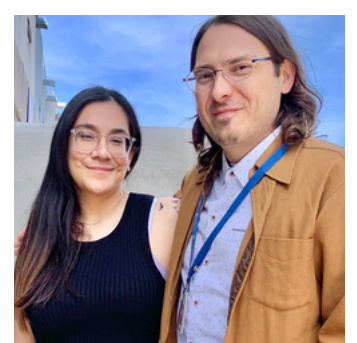


FOCUS AREA: SOCIAL/FAMILY ENGAGEMENT AND STABILITY

- FAMILIES PARTICIPATING IN FAMILY ENGAGEMENT EVENTS: **1,960**
- FAMILIES WHO RECEIVED SUPPORT FROM FAMILY EMERGENCY FUND: **136**
- FAMILIES NAVIGATED TO PARTNER AGENCIES THROUGH CONNECT RESOURCE NETWORK: **111**

FOCUS AREA: SOCIAL EMOTIONAL LEARNING (SEL) AND BEHAVIORAL HEALTH

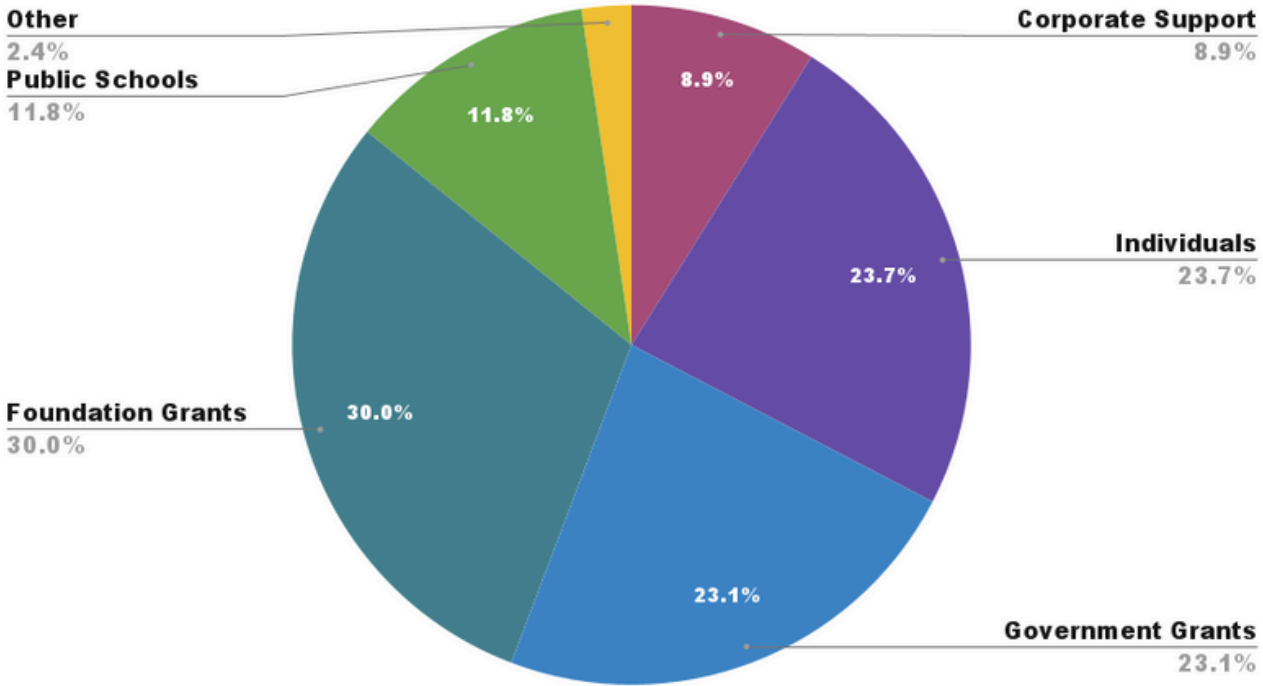
- STUDENTS PARTICIPATING IN SEL ACTIVITIES / GROUPS: **1,066**
- STUDENTS WITH A BEHAVIORAL GOAL WHO IMPROVED: **80%**



FINANCIAL SNAPSHOT

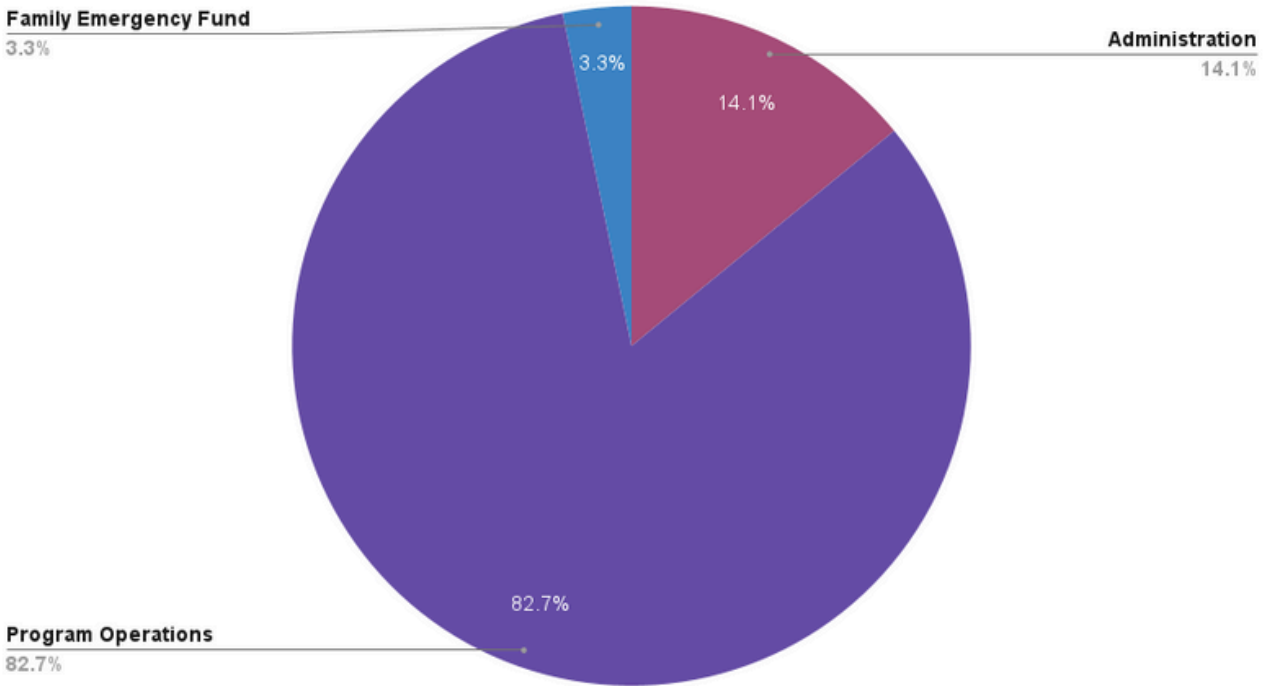
REVENUE = \$2,942,237

Fiscal Year 2025 Revenue = \$2,942,237



EXPENSES = \$2,766,639

Fiscal Year 2025 Expenses



OUR PARTNERS

FUNDING PARTNERS

Special thanks to the following generous donors for your significant, invaluable support this year. We couldn't do this work without you!

Anchorum Health Foundation
City of Santa Fe Children and Youth Commission
The Fasken Foundation
New Mexico Foundation
New Mexico Behavioral Health Services Division
Special Relativity Fund
Santa Fe County
Santa Fe Public Schools

Our profound thanks to the following foundations, corporate sponsors and public funding partners who supported our work this fiscal year.

AGA New Mexico Chapter
Altria Group, Inc.
Anchorum Health Foundation
Anonymous
Atlantic Philanthropies, Inc.
Avalon Trust
Benevity Community Impact Fund
Bernalillo County
Bridges Fund
Building Adventures Unlimited
Buttermilk Restaurant Group LLC
Century Bank
CHANGE Giving Platform
Christus St. Vincent
City of Santa Fe Children and Youth Commission
Communities In Schools, Inc.
Darruma Wellness Collective
Del Norte LOV Foundation
Dr. Field Goods
Enterprise Bank & Trust Foundation
Fasken Foundation
First Presbyterian Church
Flow Science, Inc.
Frost Foundation
Gale Family Foundation
Horno Restaurant
Las Campanas Community Grants Fund
Lineberry Foundation
Los Alamos National Laboratory
Employee Giving Fund
Montezuma Lodge #1

N3B
Nancy Ann Mellen Foundation
New Mexico Behavioral Health Services Division
Norma Green Foundation
Ohori's Coffee Roasters
Palace Prime
Paloma
Point72 Employee Directed Giving Foundation
S.B. Foundation
Santa Fe County
Santa Fe Hestia Fund
Santa Fe Kiwanis Foundation
Santa Fe Public Schools
Special Relativity Fund
Steele Family Foundation
Sunflower Bank
Sweetwater Harvest Kitchen
The Change Reaction
The Santa Fe Boys Fund
The Sulica Fund
The Waite and Genevieve Phillips Foundation
Thornburg Foundation
Triad National Security, LLC
Trinity On The Hill Episcopal Church
United Church of Santa Fe



COMMUNITY PARTNERS

Gratitude to these wonderful community partners for the contributions they made this year. By working together, we achieve positive results for students and families!

Adelante
Alas de Agua
Big Brothers Big Sisters Mountain Region
BookKids
Breakthrough Santa Fe
Celebrate Planet Earth
College and Career Plaza
Cozy Coats
Free Flow New Mexico
Future Focused Education
Gerard's House
Girls Inc.
Girls on the Run
Lettuce, Etc.
Littlelobe, Inc.
Mandela International Magnet School
The MASTERS Program
New Mexico Dream Team
Northern Soccer Club
Reunity Resources
Santa Fe Children's Museum
Santa Fe Community College
Santa Fe Mountain Center
Santa Fe Rooks Chess Club
Santa Fe Rotary del Sur
Santa Fe Teen Center
Somos Un Pueblo Unido
The Food Depot
The Sky Center
Yoga in Schools

COMMUNITY PARTNER SPOTLIGHT:

The Food Depot, Northern New Mexico's only food bank, works to address food insecurity in nine counties through a variety of programs and community partnerships.

In FY24, The Food Depot's programs and partner agencies distributed 10 million pounds of food, providing more than 8 million meals across Northern New Mexico. Distributions can include purchased food, community donations, rescued food, and USDA commodities.

More than 80 independent nonprofit partner agencies work with The Food Depot to distribute healthy food and provide essential services. Partner agencies include soup kitchens, emergency pantries, transitional or supported living programs, community centers, college campuses, and more.





Communities In Schools

New Mexico

CONTACT US!

Communities In Schools of NM
1442 S. Saint Francis Drive, Suite F
Santa Fe, NM, 87501
Mailing Address: PO Box 367
Santa Fe, NM 87504
Phone: 505-954-1880
Email: supportkids@cismn.org

